

OAKRIDGE BUSINESS CENTER

FOR LEASE - 1201-1209 W CARRIER PKWY, GRAND PRAIRIE, TX

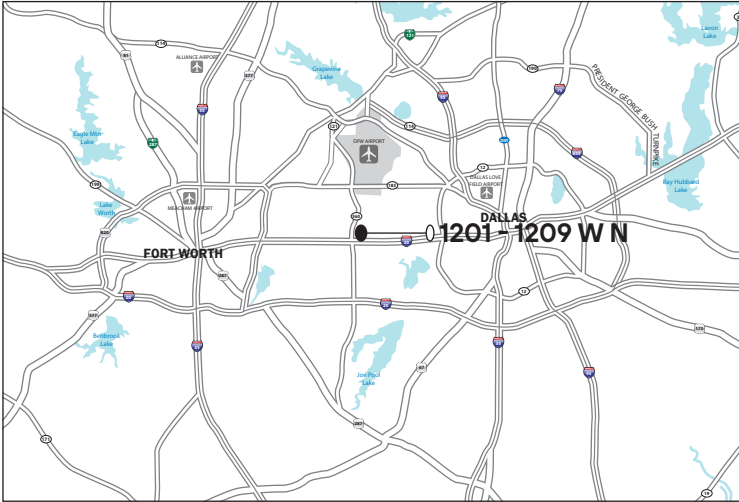
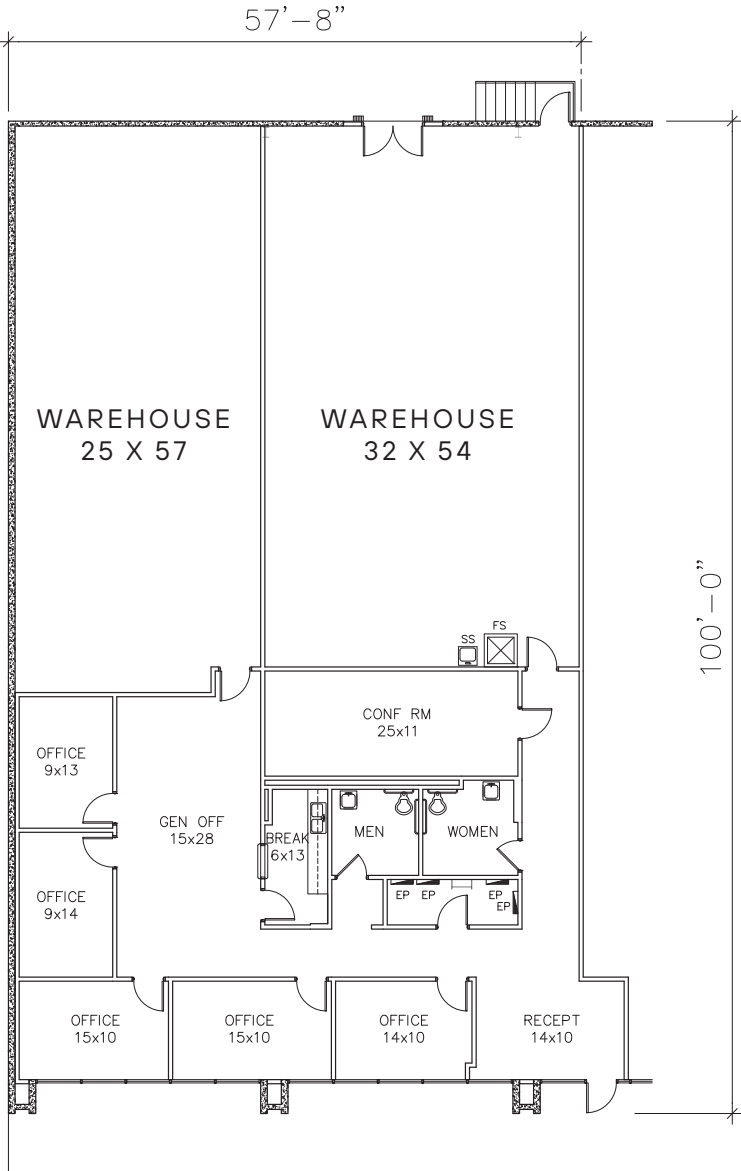


LISTING HIGHLIGHTS

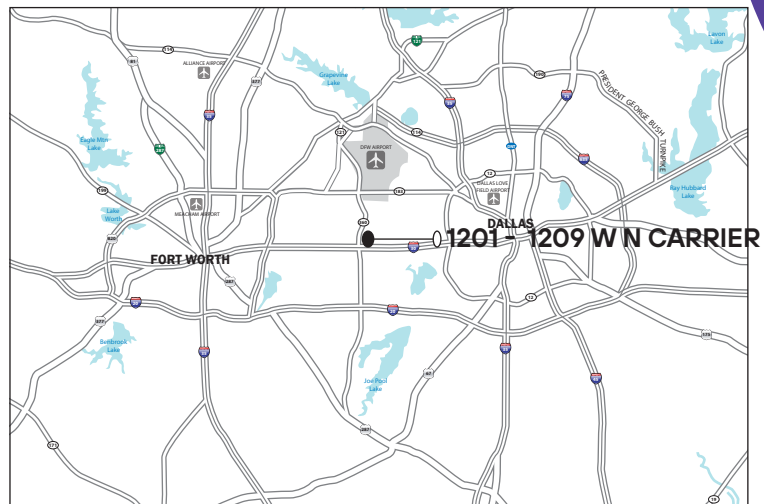
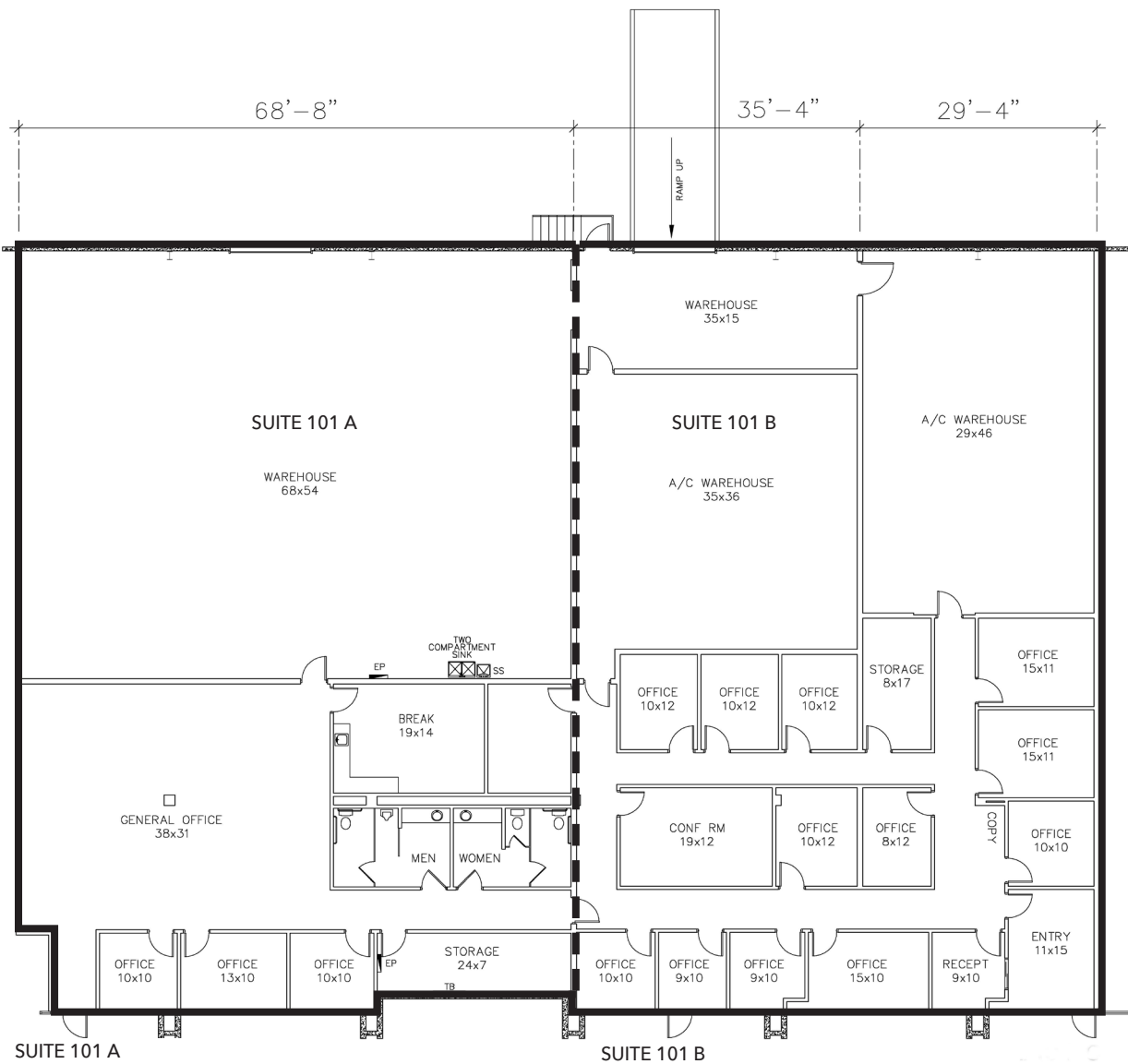
	Total SF	Office SF	Clear Height	Loading
SUITE 100	5,625	2,380	16'	1 Dock high
SUITE 101	13,039	5,895	16'	1 Dock high, 1 ramped door
SUITE 201	4,980	4,679	16'	1 Dock high door

Oakridge Business Center offers excellent high visibility, front park/rear load, office /flex space located on Carrier Parkway in the Great Southwest Industrial Park. Suites can be leased together or separately.

For Lease Suite 100 - 5,625 SF



For Lease Suite 101 - 13,039



For Lease Suite 201 - 4,980

Existing Layout

Proposed Layout

